

# FOR LEASE

## ±6,700 SF INDUSTRIAL BUILDING

1126 E. LINCOLN STREET  
BANNING, CA 92220



### FOR MORE INFORMATION CONTACT:

ROBERT MENDIETA - SENIOR VICE PRESIDENT

951.977.3251 | robertm@cbcsocalgroup.com

CalDRE # 01422904

27720 Jefferson Avenue, Suite 100-B

Temecula | California | 92590

t 951.200.7683 | f 951.239.3147

cbcsocalgroup.com

CalDRE # 01998652



SC

# FOR LEASE

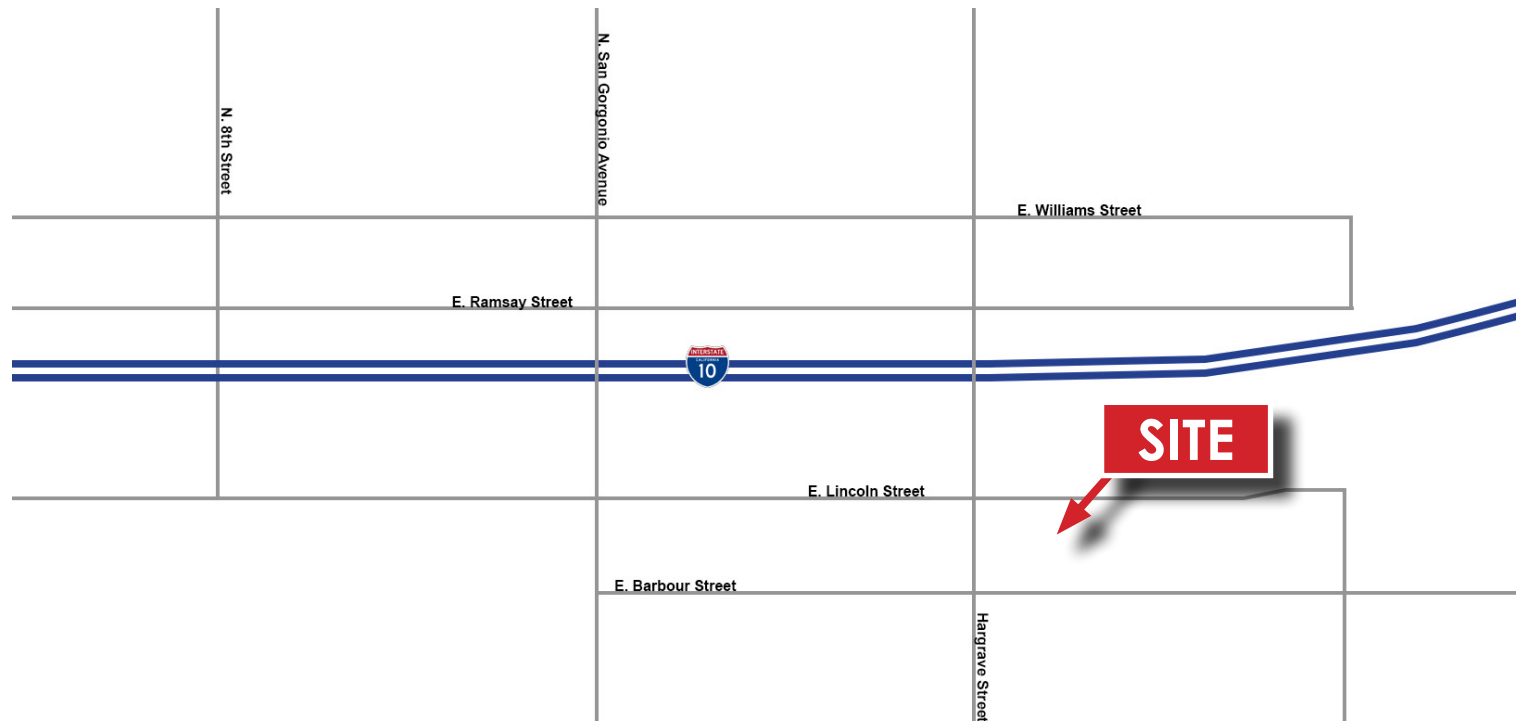
±6,700 SF INDUSTRIAL BUILDING

1126 E. LINCOLN STREET  
BANNING, CA 92220

## PROPERTY HIGHLIGHTS

- ±6,700 SF of Warehouse Space
- Situated on 0.68 Ac
- Approximately ±800 Sf of Office Space (2 story)
- 1 Ground Level Door (12' x 14')
- 2 Dock High Doors (back)
- 400 AMPS of Power (to be verified)
- 18' Clear Height
- Natural Lighting from Skylights
- Fully Fenced and Paved Yard
- Easy Access to I-10 FWY
- May consider a Lease Option to Purchase in 2020

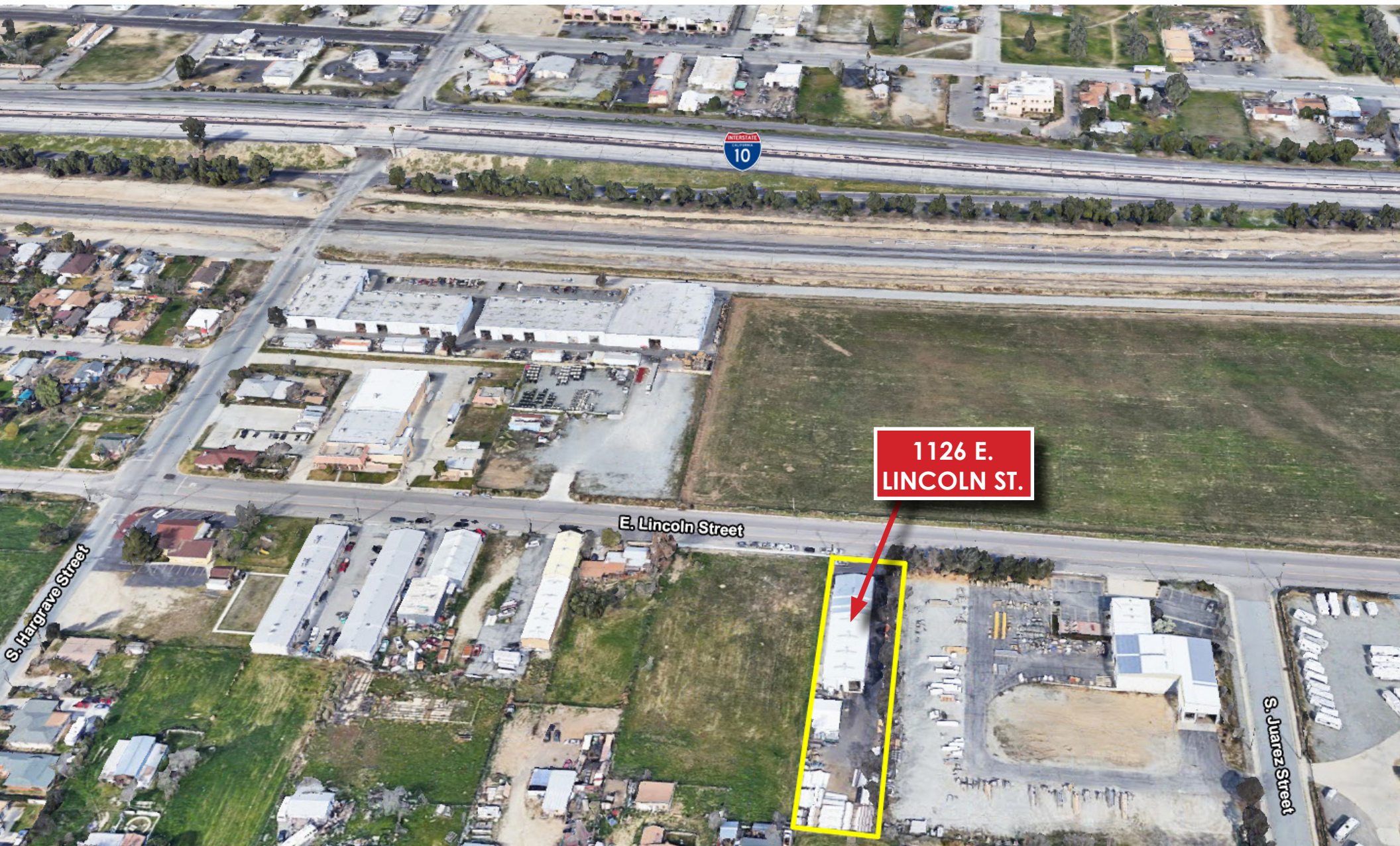
## MAP



# FOR LEASE

## ±6,700 SF INDUSTRIAL BUILDING

**1126 E. LINCOLN STREET  
BANNING, CA 92220**



**1126 E.  
LINCOLN ST.**

E. Lincoln Street

S. Hagrave Street

S. Juarez Street



## FOR MORE INFORMATION CONTACT:

**ROBERT MENDIETA** - SENIOR VICE PRESIDENT

951.977.3251 | robertm@cbcsocalgroup.com

CalDRE # 01422904

27720 Jefferson Avenue, Suite 100-B

Temecula | California | 92590

t 951.200.7683 | f 951.239.3147

cbcsocalgroup.com

CalDRE # 01998652



**SC**