

±18,282 SF BUILDING FOR SALE

611 W. FLORIDA AVENUE, HEMET, CA 92543



± 18,282 SF BUILDING ON A ±52,620 SF LOT

PROPERTY DESCRIPTION

- ± 18,282 SF building
- ± 52,620 SF lot
- Zoned C-2
- 2 ground level doors
- Approximately 300' frontage along Florida Avenue
- Average daily traffic is ± 28,000



For More Information, please contact:

ROBERT MENDIETA

Vice President

(951) 977-3251

robertm@cbcsocalgroup.com

www.RealEstateForSaleInlandEmpire.com

CalBRE License # 01422904

1901 Orange Tree Lane,
Suite 250

Redlands, CA 92374

(951) 200-7683

www.cbcsocalgroup.com

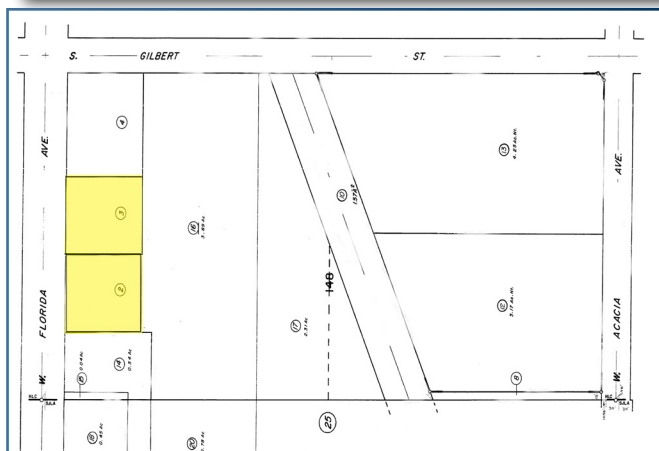
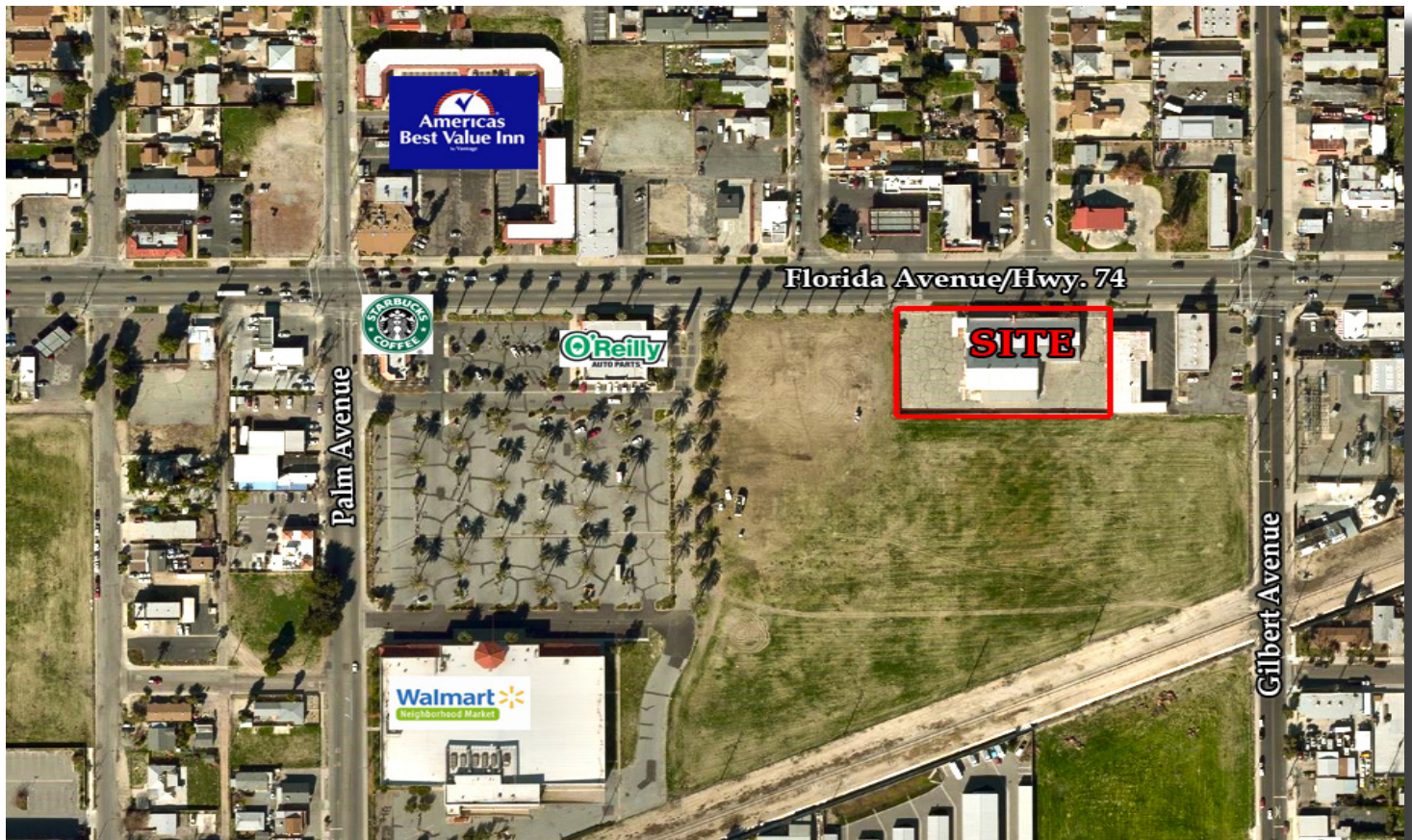


Coldwell Banker Commercial and the Coldwell Banker Commercial Logo are registered service marks licensed to Coldwell Banker Commercial Affiliates. Each Office is Independently Owned and Operated. All information contained herein has been obtained from sources deemed reliable. However, no warranty or guarantee is made as to the accuracy of the information.

CalBRE License # 01909862

±18,282 SF BUILDING FOR SALE

611 W. FLORIDA AVENUE, HEMET, CA 92543



For More Information, please contact:

ROBERT MENDIETA

Vice President

(951) 977-3251

robertm@cbcsocalgroup.com

www.RealEstateForSaleInlandEmpire.com

CalBRE License # 01422904

1901 Orange Tree Lane,

Suite 250

Redlands, CA 92374

(951) 200-7683

www.cbcsocalgroup.com



Coldwell Banker Commercial and the Coldwell Banker Commercial Logo are registered service marks licensed to Coldwell Banker Commercial Affiliates. Each Office is Independently Owned and Operated. All information contained herein has been obtained from sources deemed reliable. However, no warranty or guarantee is made as to the accuracy of the information.

CalBRE License # 01909862